

The background of the advertisement features a dark grey field with white outlines of various cells and organelles, including nuclei, mitochondria, and vesicles, scattered across the left and bottom portions. On the right side, there is a vertical strip showing a microscopic image of cells with yellow and red highlights, representing the analysis results.

S.CORE

Web-Based Image Analysis

Powerful

Flexible

Convenient

by

S.CO
LifeScience

www.sco-lifescience.com

Quantify your Assay with S.CORE

The innovative web-based image analysis system

S.CORE is a web-based system for automatic image analysis which offers a powerful, flexible, and convenient alternative to other existing image analysis systems. Benefit from the power of S.CORE whenever image objects have to be enumerated, measured or statistically quantified. S.CORE offers sophisticated standard analysis modules as well as customized solutions tailored to your needs.

Method

Just take your images as you are used to, with the system available in your lab. Then upload them via the internet to our analysis unit. The extracted results will be available on your personal internet portal shortly after.

Benefits

Powerful

The powerful central data processing unit of S.CO LifeScience is the heart of S.CORE. The revolutionary Definiens Cognition Network Technology enables a new level of object recognition, impossible with other systems. The automatic image analysis process is based on sophisticated algorithms and ensures objective, accurate and reproducible analysis of your assay.

Flexible

Using S.CORE, you can rely on a vast number of standard modules for a variety of different assays. In addition, S.CORE can be adapted to almost any analytical task through integration of new modules which we can develop tailored to your specific requirements.

Convenient

Compared to other image analysis systems S.CORE does not require any additional hardware or software installation. All you need is a PC with an internet connection. We establish a personalized, easy-to-use internet portal for you, through which you can access the central analysis unit from any place in the world at any time.

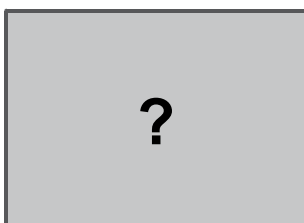
Further information

For more information on S.CORE, please visit us at www.sco-lifescience.com. You can find brochures on selected standard modules in the download section. Our price list for our current standard modules is available upon request.

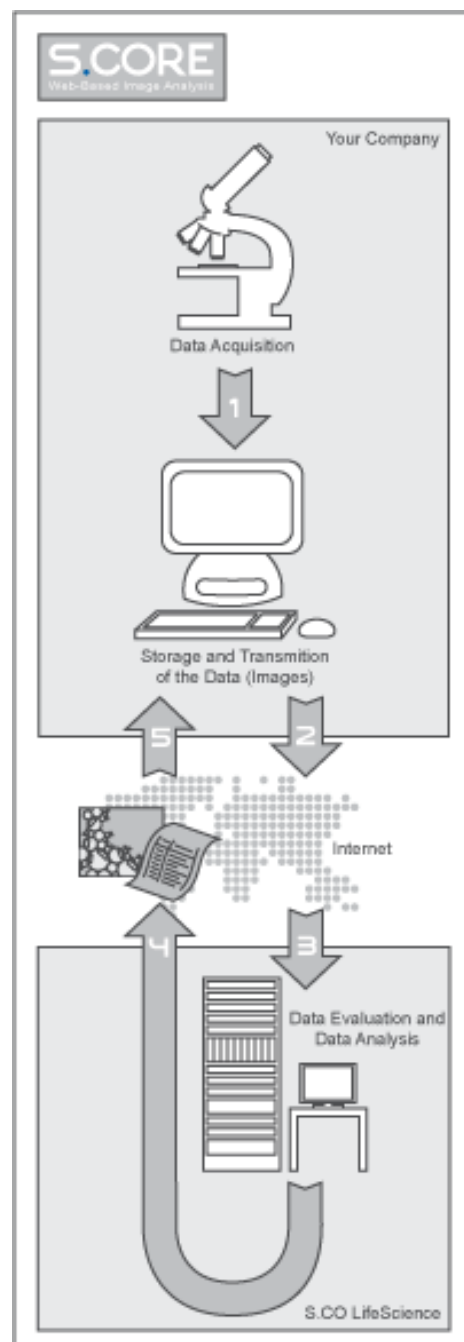
Free Trial

Please use our Free Trial Service at www.sco-lifescience.com or just send us an e-mail with your images, along with a short description of your requirements.

Customized Solution Service

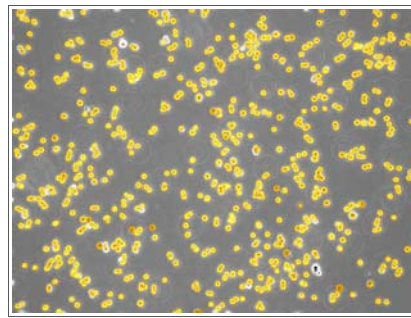
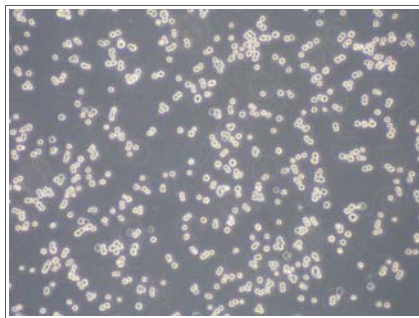


We are happy to develop individual image analysis solutions tailored to your specific needs. Of course we can also include the post-processing of the obtained object data.



Trypsinized Cells

Determination of cell size and number: Counting of trypsinized cells



Output Statistics
Number of cells
Size distribution

50 Evaluations: 150.00 Euro
 Order Number: **SAM100103**

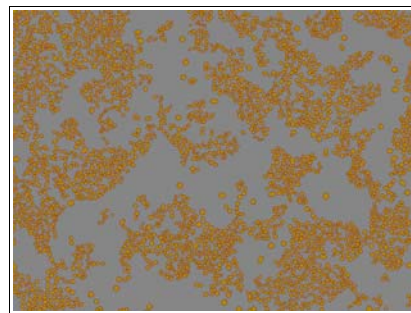
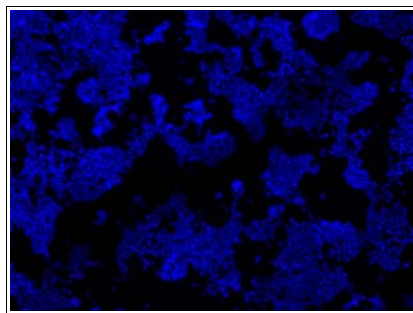
100 Evaluations: 245.00 Euro
 Order Number: **SAM100104**

250 Evaluations: 490.00 Euro
 Order Number: **SAM100105**

500 Evaluations: 790.00 Euro
 Order Number: **SAM100106**

Blue Stained Nuclei

Quantification of cells: Counting of blue-stained nuclei (e.g. DAPI staining)



Output Statistics
Number of blue nuclei

50 Evaluations: 150.00 Euro
 Order Number: **SAM100203**

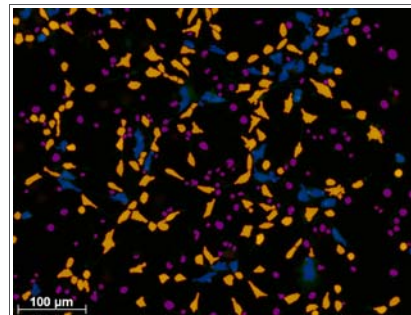
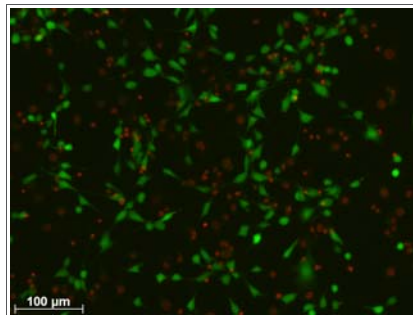
100 Evaluations: 245.00 Euro
 Order Number: **SAM100204**

250 Evaluations: 490.00 Euro
 Order Number: **SAM100205**

500 Evaluations: 790.00 Euro
 Order Number: **SAM100206**

Live/Dead Staining

Quantification of viable and dead cells: Evaluation of live/dead stainings



Output Statistics
Number of living cells
Number of dead cells
Number of damaged cells

50 Evaluations: 150.00 Euro
 Order Number: **SAM100303**

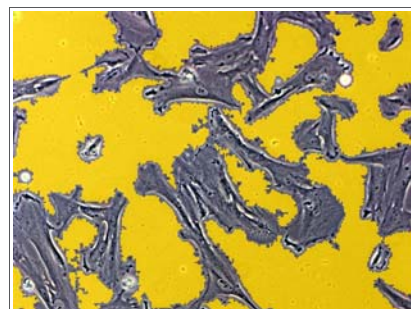
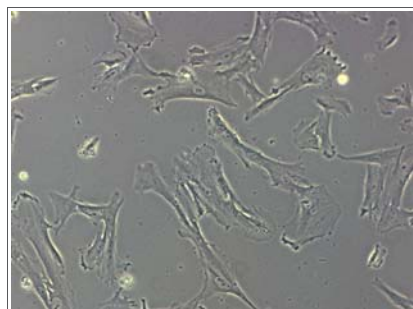
100 Evaluations: 245.00 Euro
 Order Number: **SAM100304**

250 Evaluations: 490.00 Euro
 Order Number: **SAM100305**

500 Evaluations: 790.00 Euro
 Order Number: **SAM100306**

Confluence

Quantification of confluency in adherent cell cultures



Output Statistics
% of non-covered area

50 Evaluations: 150.00 Euro
 Order Number: **SAM100403**

100 Evaluations: 245.00 Euro
 Order Number: **SAM100404**

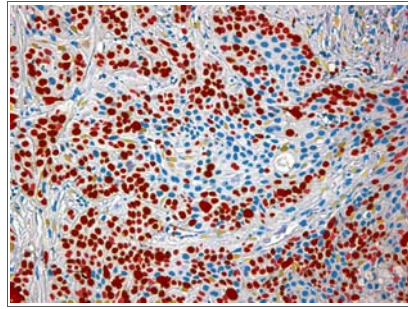
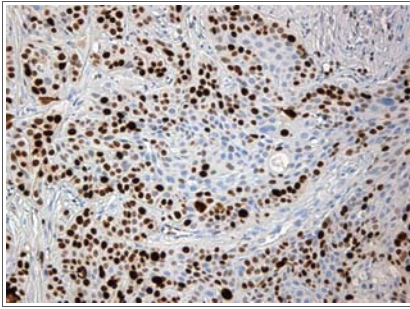
250 Evaluations: 490.00 Euro
 Order Number: **SAM100405**

500 Evaluations: 790.00 Euro
 Order Number: **SAM100406**

Immunostaining Quantification

Immunostaining, nuclear

Quantification of nuclear stained immunopositive cells



Output Statistics
Number of all nuclei
Number of all positive nuclei
% of positive cells

50 Evaluations: 240.00 Euro

100 Evaluations: 395.00 Euro

250 Evaluations: 790.00 Euro

500 Evaluations: 1280.00 Euro

Order Number: **SAM200103**

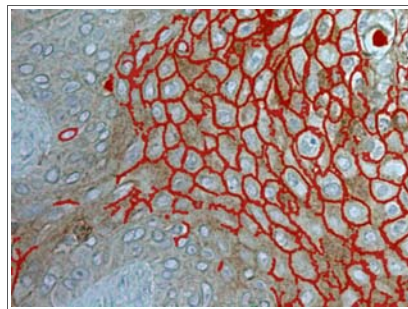
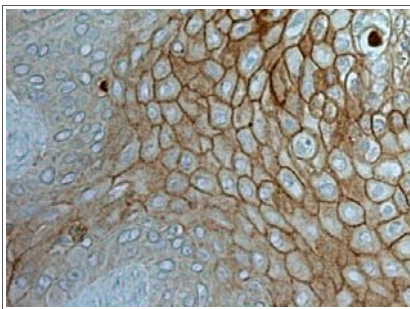
Order Number: **SAM200104**

Order Number: **SAM200105**

Order Number: **SAM200106**

Immunostaining, membranica

Quantification of membranica stained immunopositive cells



Output Statistics
Number of all cells
Number of cells with positive membranica staining
% of positive cells

50 Evaluations: 240.00 Euro

100 Evaluations: 395.00 Euro

250 Evaluations: 790.00 Euro

500 Evaluations: 1280.00 Euro

Order Number: **SAM200303**

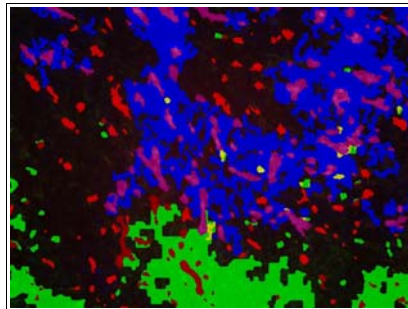
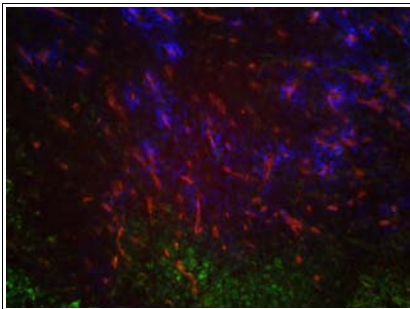
Order Number: **SAM200304**

Order Number: **SAM200305**

Order Number: **SAM200306**

Immunostaining, differential

Quantification of multicoloured immunopositive cells, with colocalization and proximity relationship



Output Statistics
Area of each stained areal
Number of objects related to the stained areals
Customized Features

50 Evaluations: 240.00 Euro

100 Evaluations: 395.00 Euro

250 Evaluations: 790.00 Euro

500 Evaluations: 1280.00 Euro

Order Number: **SAM200003**

Order Number: **SAM200004**

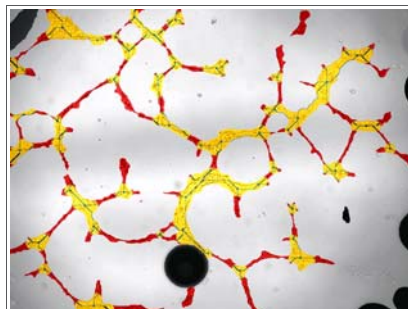
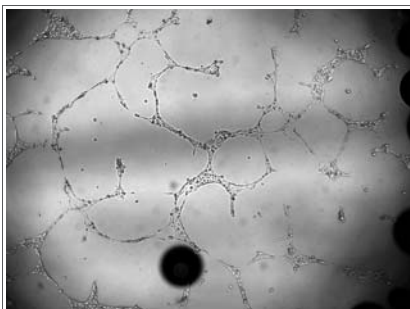
Order Number: **SAM200005**

Order Number: **SAM200006**

Angiogenesis Assay Evaluation

Tube Formation, native

Quantitative evaluation of tube-like structures of non-stained Matrigel Assays



Output Statistics
Total tube length
Number of branching points
Number of outlets per branching point

50 Evaluations: 295.00 Euro

100 Evaluations: 490.00 Euro

250 Evaluations: 980.00 Euro

500 Evaluations: 1480.00 Euro

Order Number: **SAM100703**

Order Number: **SAM100704**

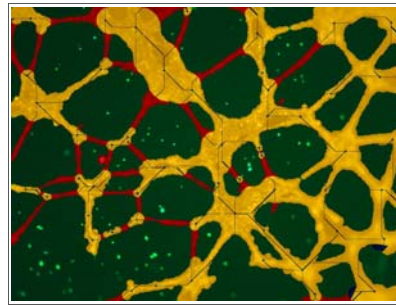
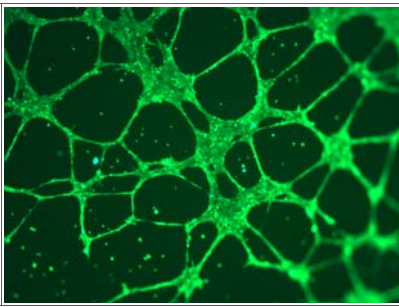
Order Number: **SAM100705**

Order Number: **SAM100706**

Angiogenesis Assay Evaluation

Tube Formation, fluorescent

Quantitative evaluation of tube-like structures of fluorescence-stained Matrigel Assays



Output Statistics

Total tube length

Number of branching points

Number of outlets per branching point

50 Evaluations: 240.00 Euro

100 Evaluations: 395.00 Euro

250 Evaluations: 790.00 Euro

500 Evaluations: 1280.00 Euro

Order Number: **SAM100803**

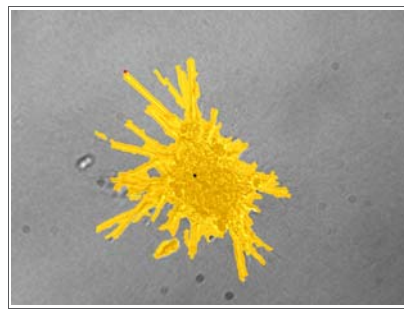
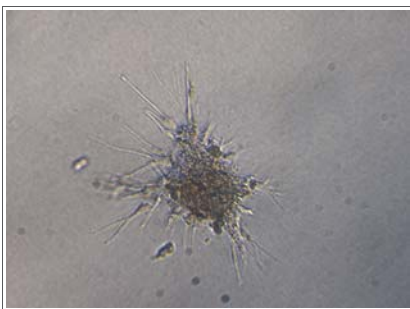
Order Number: **SAM100804**

Order Number: **SAM100805**

Order Number: **SAM100806**

Sprouting Assay, spheroid

Quantitative evaluation of Spheroid Sprouting Assays



Output Statistics

Area

Perimeter

Mean distance of sprout ends from center

Max. distance of sprout ends from center

50 Evaluations: 240.00 Euro

100 Evaluations: 395.00 Euro

250 Evaluations: 790.00 Euro

500 Evaluations: 1280.00 Euro

Order Number: **SAM100903**

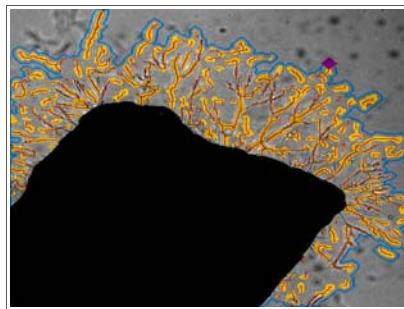
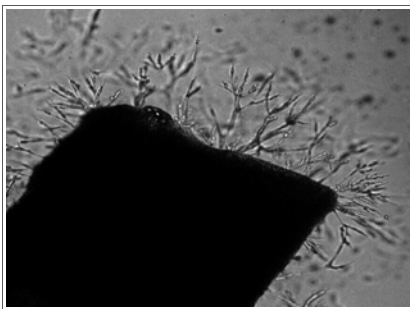
Order Number: **SAM100904**

Order Number: **SAM100905**

Order Number: **SAM100906**

Sprouting Assay, aortic ring

Quantitative evaluation of aortic Ring Sprouting Assays



Output Statistics

Total length of sprouts

Mean distance of sprout ends from ring surface

Max. distance of sprout ends from ring surface

50 Evaluations: 295.00 Euro

100 Evaluations: 490.00 Euro

250 Evaluations: 980.00 Euro

500 Evaluations: 1480.00 Euro

Order Number: **SAM100803**

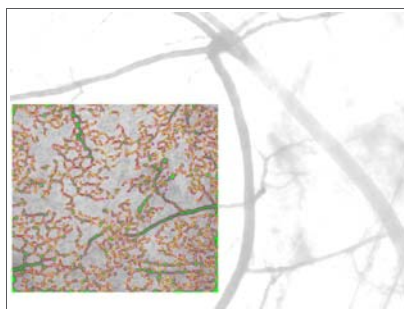
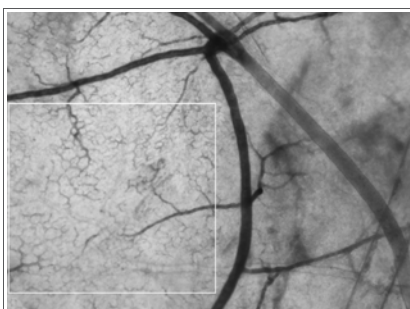
Order Number: **SAM100804**

Order Number: **SAM100805**

Order Number: **SAM100806**

CAM Assay

Quantitative evaluation of Chorioallantoic Membrane Assays



Output Statistics

Total length of vessel structures

Number of branching points

Mean number of outlets per branching point

50 Evaluations: 295.00 Euro

100 Evaluations: 490.00 Euro

250 Evaluations: 980.00 Euro

500 Evaluations: 1480.00 Euro

Order Number: **SAM101103**

Order Number: **SAM101104**

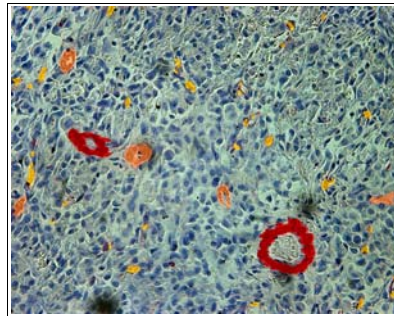
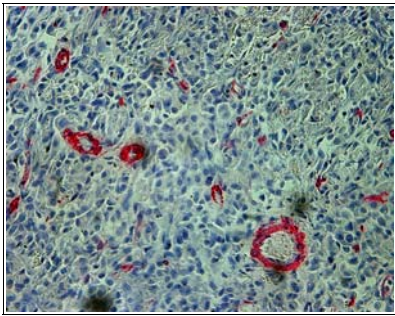
Order Number: **SAM101105**

Order Number: **SAM101106**

Angiogenesis Assay Evaluation

Vascularization

Quantitative evaluation of the degree of vascularisation in histological sections



Output Statistics

Number of small vessels
Number of mid-size vessels
Number of big vessels

50 Evaluations: 240.00 Euro

100 Evaluations: 395.00 Euro

250 Evaluations: 790.00 Euro

500 Evaluations: 1280.00 Euro

Order Number: **SAM200403**

Order Number: **SAM200404**

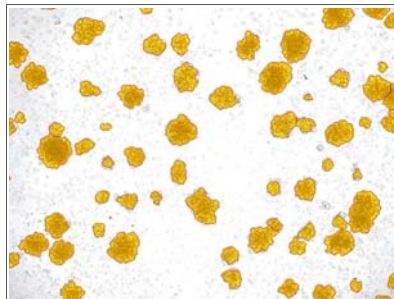
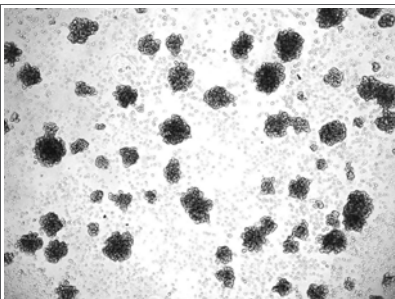
Order Number: **SAM200405**

Order Number: **SAM200406**

Colony Forming Assay Evaluation

Colony Forming

Quantitative evaluation of Colony Forming Assays



Output Statistics

Number of colonies
Area of each colony
Mean area of colonies

50 Evaluations: 240.00 Euro

100 Evaluations: 395.00 Euro

250 Evaluations: 790.00 Euro

500 Evaluations: 1280.00 Euro

Order Number: **SAM101303**

Order Number: **SAM101304**

Order Number: **SAM101305**

Order Number: **SAM101306**

Colony Forming, 6-well

Quantitative evaluation of Colony Forming Assays performed in 6-wells plates



Output Statistics

Number of colonies per well

50 Evaluations: 240.00 Euro

100 Evaluations: 395.00 Euro

250 Evaluations: 790.00 Euro

500 Evaluations: 1280.00 Euro

Order Number: **SAM101403**

Order Number: **SAM101404**

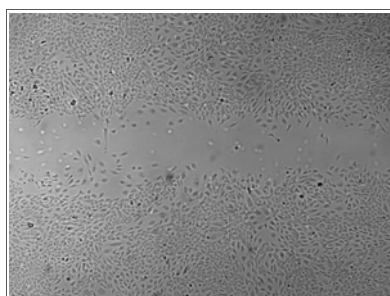
Order Number: **SAM101405**

Order Number: **SAM101406**

Cell Migration Quantification

Scratch Assay

Quantitative evaluation of Scratch Assays



Output Statistics

% of non-covered area

50 Evaluations: 150.00 Euro

100 Evaluations: 245.00 Euro

250 Evaluations: 490.00 Euro

500 Evaluations: 790.00 Euro

Order Number: **SAM101203**

Order Number: **SAM101204**

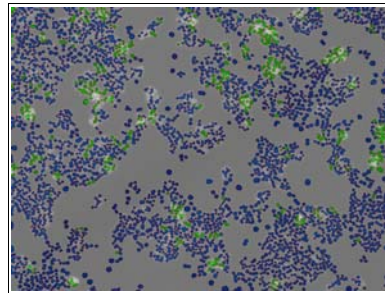
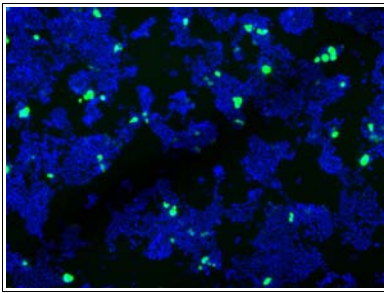
Order Number: **SAM101205**

Order Number: **SAM101206**

Transfection Efficiency Determination

Transfection, blue nuclei

Determination of transfection efficiency: Counting of green-stained transfected cells (GFP) in relation to all blue-stained nuclei (e.g. DAPI staining)



Output Statistics

Total number of cells
Number of transfected cells
% of transfected cells

50 Evaluations: 240.00 Euro

100 Evaluations: 395.00 Euro

250 Evaluations: 790.00 Euro

500 Evaluations: 1280.00 Euro

Order Number: **SAM100503**

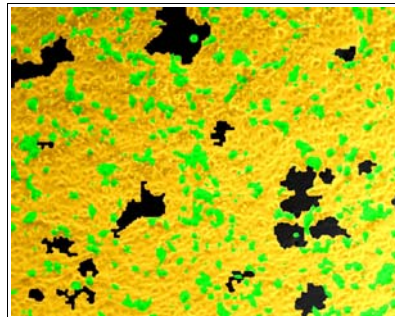
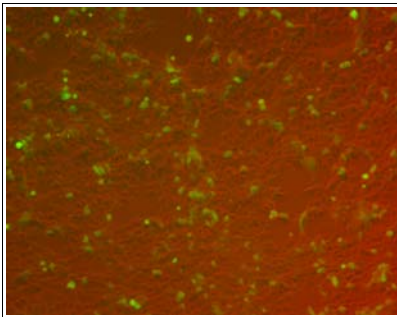
Order Number: **SAM100504**

Order Number: **SAM100505**

Order Number: **SAM100506**

Transfection, phasecontrast

Determination of transfection efficiency: Area of green-stained (GFP) transfected cells versus non-stained cells



Output Statistics

Total area of cells
Area of transfected cells
% of transfected cells

50 Evaluations: 240.00 Euro

100 Evaluations: 395.00 Euro

250 Evaluations: 790.00 Euro

500 Evaluations: 1280.00 Euro

Order Number: **SAM100603**

Order Number: **SAM100604**

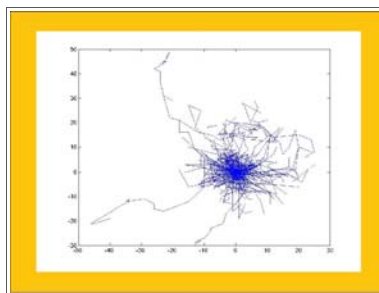
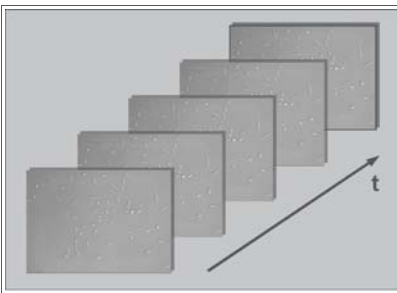
Order Number: **SAM100605**

Order Number: **SAM100606**

Tracking Evaluation

Cell Tracking

Tracing of migrating cells in time laps movies (A = Max. 200 Pictures / Movie, B = Max. 500 Pictures / Movie)



Output Statistics

Trace of every single cell
Velocity of every single cell
Mean velocity of cells
Mean direction of migration of all cells

1 Evaluation (A): 120.00 Euro

10 Evaluations (A): 890.00 Euro

1 Evaluation (B): 210.00 Euro

10 Evaluations (B): 1575.00 Euro

Order Number: **SAM300100**

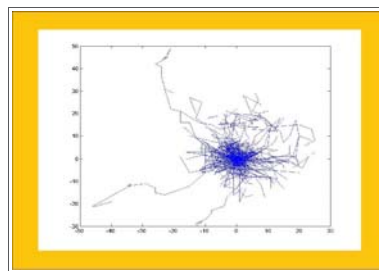
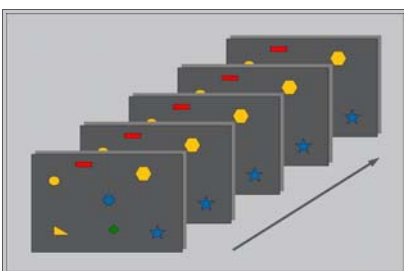
Order Number: **SAM300110**

Order Number: **SAM300101**

Order Number: **SAM300111**

Object Tracking

Tracing of objects in time laps movies (A = Max. 200 Pictures / Movie, B = Max. 500 Pictures / Movie)



Output Statistics

Trace of every single object
Velocity of every single object
Mean velocity of objects
Mean direction of migration of all objects

1 Evaluation (A): 90.00 Euro

10 Evaluations (A): 675.00 Euro

1 Evaluation (B): 150.00 Euro

10 Evaluations (B): 1125.00 Euro

Order Number: **SAM300200**

Order Number: **SAM300210**

Order Number: **SAM300201**

Order Number: **SAM300211**

All prices plus VAT.
Prices valid until 30/09/2008

S.CO LifeScience GmbH
Boltzmannstr. 11A
85748 Garching (Munich)
Germany

Fon: +49 89 1214023 40
Fax: +49 89 1214023 44
info@sco-lifescience.com
www.sco-lifescience.com

S.CO
LifeScience